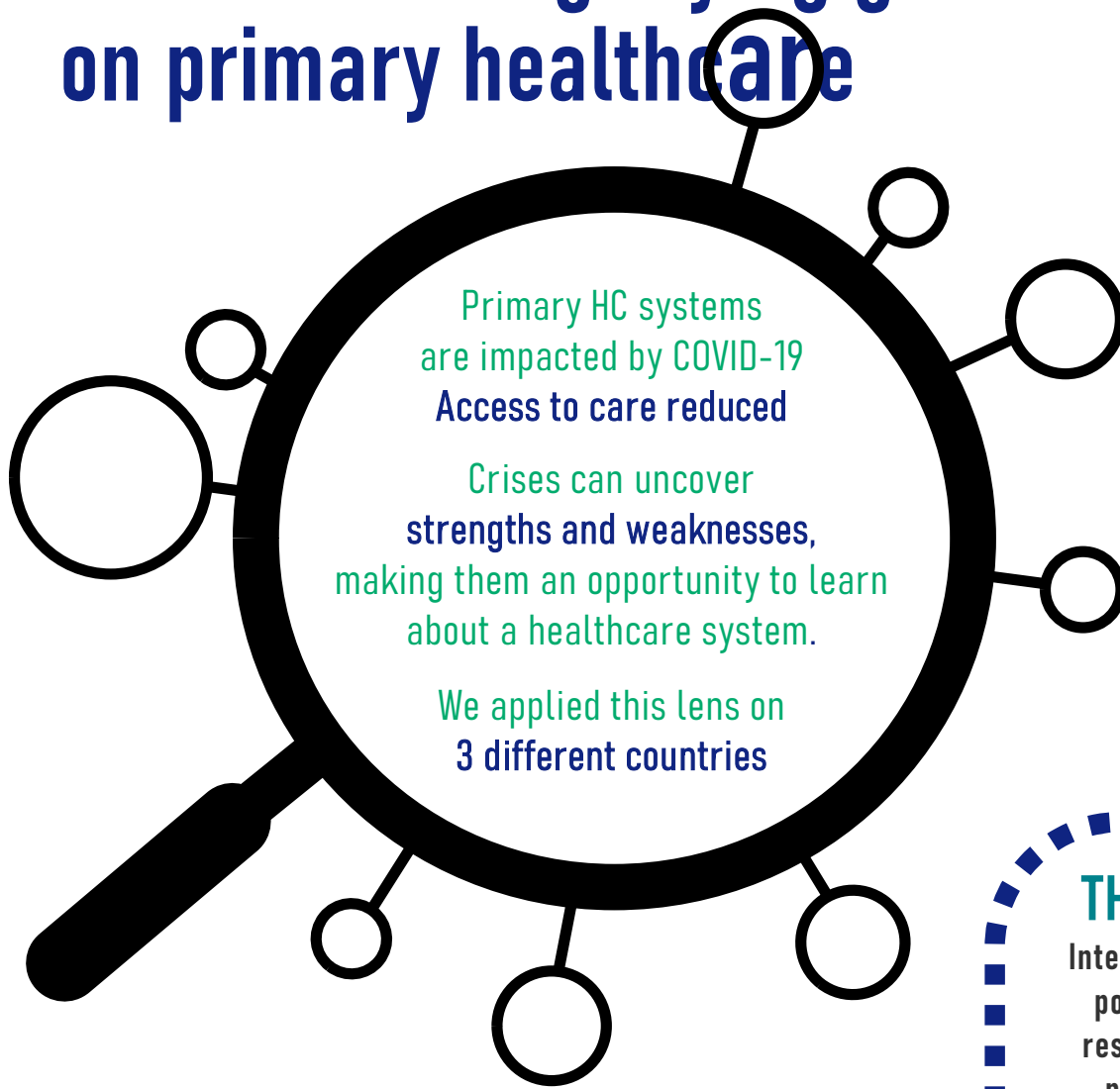


COVID as a magnifying glass on primary healthcare



THE STUDY
Interviews with 69 policy makers, researchers and primary care providers with thematic analysis

	COMMONALITIES
Direct impact	Disruption of care. Patients fearing to visit HC. Burden on HCW.
Opportunities	Importance of PHC recognised. Innovations such as telemedicine.



	BELGIUM	CAMBODIA	SLOVENIA
System strengths	Entrepreneurship of HCW	Strong civil servant ethos at public health services	Central leadership, emphasis on prevention
System weaknesses	Fragmentation, PHC less organised and coordinated	Limited budget and medication shortages	Little flexibility, shortage of HCW



Questions?
Come and find me!

www.scuby.eu | katrien.danhieux@uantwerpen.be



This project received funding from the European Union's Horizon 2020 research and innovation programme under grant agreement No 825432

Katrien Danhieux, Monika Martens, Srean Chhim, Sokunthea Yem, Matic Mihevc, Antonija Poplas Susiç, Wim Van Damme, Edwin Wouters, Josefien van Olmen

